



TRAMACO
**NEW ADHESION PROMOTER
 FOR PRINTING INKS**

PAGE 06

ROWA LACK
**WATER-BASED ANTI-GRAFFITI
 LACQUERS FOR ARTIFICIAL
 LEATHER APPLICATIONS**

PAGE 07



**INTERVIEW
 THE ROMIRA EXPERTS**
 PAGE 03

ROMIRA	> 02 <u>ROMIRA sets new standards with the further development of ROMILOY®PC-MA</u>	> 03 <u>Interview with ROMIRA experts</u>
	> 04 <u>ROMIRA benefits from trade fair success with optical highlights</u>	
ROWASOL	> 04 <u>Flexible efficiency with new inline coloring system from OPM</u>	
ROWA GROUP	> 05 <u>ROWA GROUP companies are expanding PV systems</u>	
TRAMACO	> 06 <u>New adhesion promoter for printing inks with ECHA-compliant stabilizer</u>	> 06 <u>European Coatings Show coming SOON!</u>
ROWA LACK	> 07 <u>Water-based anti-graffiti lacquers for artificial leather applications</u>	
ROWA MASTERBATCH	> 07 <u>Freshly brewed: Mocha Mousse is the Pantone color of the year</u>	
ROWA INC.	> 08 <u>ROWA Inc. works at a high level</u>	
ROWA GROUP	> 08 <u>Current information about the exhibition year 2025</u>	

CONTENT



Kai Müller
CEO
ROWA GROUP

Dear business partners,
Ladies and Gentlemen,

engaging in conversation, staying in conversation, even and especially in challenging situations, is an important characteristic and, if you can say so, an attitude, perhaps even a passion of ROWA GROUP employees, and not least something that probably also characterizes me.

Of course, we are very happy to use events such as the European Coatings Show in Nuremberg at the end of March or KUTENO in May, which has joined forces with KPA for the first time and is being held at the new Bad Salzflen location due to high demand. But even outside of such industry get-togethers, it is the lively discourse that determines our day-to-day work, both internally and externally, across companies and departments, between trainees, experts and managing directors, and sometimes even comfortably at the conference table with a homemade cake in the Pantone color of the year!

This is confirmed by our colleagues Victor Fernandes and Taner Kaplan, who report on page 3 about ROMIRA's highly individual cooperation with customers, among other things. Of course, our other companies also have exciting topics to talk about, such as ROWASOL with the new inline coloring system, see page 4, or ROWA Lack, which presents its latest developments in the field of anti-graffiti lacquers on page 7.

If you would like to find out more about our news & stories and our corporate culture, I recommend that, in addition to reading this and visiting one of our trade fair appearances, you also click on our website and our LinkedIn accounts, where we are always providing new insights into the ROWA GROUP. Or even better: Stop by our company's location - we would be happy to invite you!

With best regards,
Your Kai Müller

Always one step ahead: ROMIRA SETS NEW STANDARDS WITH THE FURTHER DEVELOPMENT OF ROMILOY® PC-MA

ROMIRA's innovative strength is once again demonstrated in a successful product development: With the ROMILOY® PC-MA compounds and their optimized material properties as well as groundbreaking application options, the company is setting new standards for the automotive sector - both in the interior and exterior areas. And thanks to the Mold-In-Color concept, the compounds guarantee design freedom without painting - even high gloss and matt in one tool are possible.

ROMILOY® PC-MA compounds impress with the combination of the following properties: color depth and very good scratch resistance like a PMMA, high impact strength, temperature resistance and very good chemical resistance like a PC/ASA and a high degree of gloss on glossy surfaces like a polycarbonate.

HIGH-PERFORMANCE SOLUTIONS FOR INTERIOR

The ROMIRA experts have specifically developed ROMILOY® PC-MA to meet the specific requirements of modern vehicle interiors. Part of the range is ROMILOY® PC-MA 602053: In addition to a deep color, this compound impresses with very low emission values, particularly good scratch resistance and UV protection specially developed for the interior. Thanks to these properties, sustainable aesthetics and durability are guaranteed - even with intensive use and changing lighting conditions.

MAXIMUM RESISTANCE FOR EXTERIOR

ROMIRA has designed the ROMILOY® PC-MA 602080 in Cosmos Black especially for exterior - a high-performance solution that scores with its outstanding deep black color. Together with the advantages mentioned above, ROMILOY® PC-MA 602080 is therefore the ideal partner for demanding exterior applications where long-lasting performance and a high-quality appearance are essential.

COLOR VARIETY AND FLEXIBILITY

Another highlight of ROMILOY® PC-MA is the expanded color palette: In addition to the iconic, high-gloss deep

black, the materials offer exceptional colorability in numerous other colors. At the same time, the materials are perfectly suited for finishing with the hot stamping process, which opens up further design options.

FOCUS ON USER-FRIENDLINESS

In order to further simplify the integration of ROMILOY® PC-MA, ROMIRA has made a decisive contribution towards user-friendliness: Moldflow data is now available for the exterior and interior types. This digital support significantly simplifies tool design and ensures optimal use of the materials in the production chain. In addition, all materials meet the FMVSS-302 standards and are therefore ideally suited for use in automotive components.

With the further development of ROMILOY® PC-MA, ROMIRA is once again setting a strong example for innovation and customer orientation. The product range is both a testament to the company's technological expertise and a promise to always be one step ahead of the increasing demands of the automotive industry. ■

> More information
Wulf-Ole Luthardt
+49 4101 706 346
w.luthardt@romira.de



HIGH-PERFORMANCE SOLUTIONS

IMPRINT

Published by ROWA GROUP Holding GmbH
Siemensstraße 1-9 | 25421 Pinneberg
V.i.S.d.P.: Kai Müller
Edited by Mascha Günther, PR Advice and text
Grafic design foersterdesign.com
Print Print & More Piffremont
Credits shutterstock.com, getty images



Let's talk about solutions to design tomorrow!

INTERVIEW WITH ROMIRA EXPERTS

Taner Kaplan, Key Account Manager Automotive at ROMIRA, and his colleague, Victor Fernandes, Technical Sales Manager, are in direct contact with customers and OEMs. Here they provide an insight into the current trends at ROMIRA and show how ROMIRA stands out from the competition and how they inspire their partners in the market with ROMIRA's CRE.ACTIVE ideas and solutions.

You both have decades of experience in the plastics and automotive industry. What has changed from ROMIRA's point of view?

KAPLAN: The plastics industry is naturally characterized by constant exciting new developments and further developments – both large and small. But in addition to product news and novelties in research, there are also, from our point of view, significant developments in our collaboration with our partners, where we are running lots of trials allowing us to be CRE.ACTIVE.



What do you mean by that?

FERNANDES: The approach has become fundamentally different! We no longer talk about plastics, but about solutions. The customer has a need and we offer a variety of solutions for it. The Mold-In-Color concept, which we have been actively promoting for several years, is of crucial importance, i.e. the fact that after the relevant parts have been injected, no further treatment of the surfaces such as painting or coating is necessary. Subsequent decoration such as hot stamping is possible if this is required for the relevant applications. Mold-In-Color solutions therefore bring great added value for our customers.

What are the advantages of Mold-In-Color?

KAPLAN: Three aspects: **1. Environment, 2. Design freedom, 3. Costs.** First of all, the reduction in the CO₂ footprint is important: after the parts have been injected, no painting or anything similar is necessary. This saves work steps and materials in production and also in the long term, for example when repairing. Secondly, the Mold-In-Color solutions offer almost

limitless design options. You can combine textures - shades of color, high gloss, matt, brushed ... Almost anything is possible! The third aspect, logical from the two previous advantages, is the significant cost savings.

FERNANDES: Let's take the radiator grille of a car, for example: Thanks to Mold-In-Color, such a part can be made from one material - regardless of the desired design. From the aesthetic point of view, you can get different appearances on parts with one material while combining different textures. At the end a disruptive design allows customers to have a more appealing product! With Mold-In-Color limitless designs are possible on the same part. This in turn also means that it can be fully recycled.

What can the customer expect?

KAPLAN: Not only at trade fairs, but also at personal meetings with customers or interested parties, we come with our CRE.ACTIVE ideas and solutions and immediately present a large selection of samples and prototypes. And this is where further service advantages come into play, because 90 percent of our solutions have already been tested. Thanks to our R&D department, we can test in-house for weathering, scratch resistance, chemical resistance, etc.

FERNANDES: Thanks to the expertise in our group of companies, we are also able, in close cooperation with our customers, to make any color request possible in a short time: solid, metallic, low gloss, ultra-low gloss, effect colors ... And we involve TIER1, TIER2, injection molders and OEMs in the process, because if you have everyone on board, it is a real win for everyone involved.

We offer solutions that are compatible and useful - and have been doing so for some time. We are something of a pioneer in the field of Mold-In-Color. Designers are working on combining different materials and technologies, but we say, look, you don't need that, you can use the same material and achieve several global company targets: CO₂ reduction, dis-

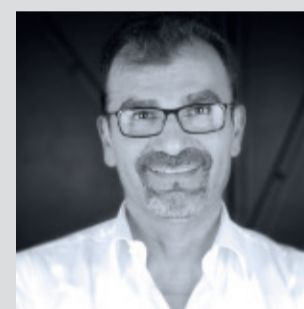
ruptive designs, differentiations from competitors and cost savings. We have many examples to show you!

KAPLAN: And another special feature is certainly that we closely monitor trends in various sectors and bring new ideas into different industries. For example, if we see headphones, a mobile phone or a furniture in unusual colors and designs, we can make that possible in other areas too. We can combine ideas and hardly have to make any compromises because our material is so compatible. So in the end, it's not just about plastics, but optimal application solutions.

INSPIRED TODAY ... DESIGN TOMORROW! ■



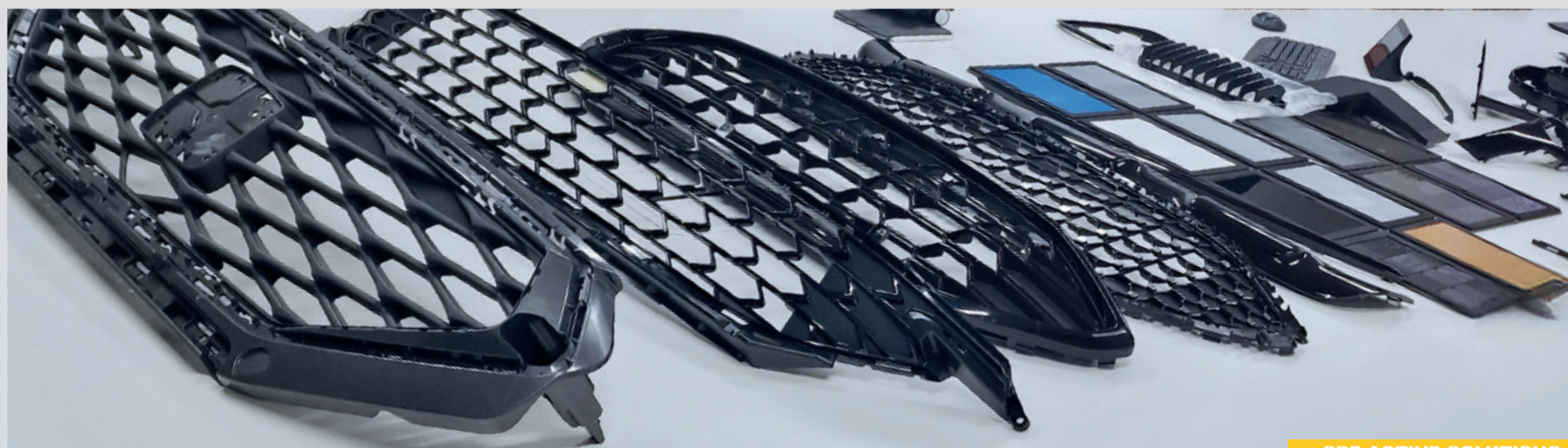
Victor Fernandes
Sales Manager France /
Benelux / North Africa



Taner Kaplan
Key Account Manager
Automotive

CURRENT

ROMIRA trends



CRE.ACTIVE SOLUTIONS

Un grand succès: ROMIRA BENEFITS FROM TRADE FAIR SUCCESS WITH OPTICAL HIGHLIGHTS

Paris Packaging Week 2025 was more successful than ever before. With over 12,500 visitors, the organizers registered an increase of 27 % compared to the previous year and thus the highest number of visitors in the 24-year history of the fair. On January 28 and 29, guests from 106 countries were interested in more than 880 exhibitors who presented their packaging innovations and designs for the luxury, beverage, cosmetics and aerosol markets.



PARIS PACKAGING WEEK

Event Director Josh Brooks said: “The remarkable increase in visitor numbers underlines how important Paris Packaging Week has become for brands and decision-makers looking for tailored packaging solutions and forward-looking answers to the evolving challenges of the industry”. Many found what they were looking for at ROMIRA: the team of experts welcomed a large number of visitors to the exhibition stand of partner Carlos Valero over the two extremely busy days.

Popular luxury brands in the perfume and cosmetics industry showed strong interest in the products, which offer tactile and visually appealing bases for

design packaging, such as the polyester compounds with:

- » high chemical resistance
- » direct PVD metallization
- » reduction of the CO₂ footprint
- » mirror production without glass and heavy metals

“We had very exciting and promising discussions about our wide range of application solutions and can already say that the Packaging Week was a complete success for us too,” summarize Francis Merinos and Victor Fernandes. ■

ROWASOL

Automated recyclate coloring

FLEXIBLE EFFICIENCY WITH NEW INLINE COLORING SYSTEM FROM OPM

The modern plastics industry is faced with the challenge of continuously developing more sustainable and efficient product solutions. The innovative CLOOPMIX® dosing system from OPM Mechatronic, in conjunction with liquid colors from ROWASOL GmbH, offers a pioneering answer to these requirements, especially for compounding recycled materials.

At the heart of the system is a precise interplay of intelligent recipe management, piston pumps and continuous color control. Liquid colors are fed directly into the extruder via up to six dosing stations. These piston dispensers work almost without pulsation and dispense the colors precisely - regardless of the pressure build-up in the system. The special feature: Instead of a rigid setting, the system continuously adjusts to achieve exact results even with fluctuations in the material composition.

Color control is carried out using the highly developed GranuTrack® system. Granules are removed directly from the production process via a drawer system and measured in a protected area to exclude external influences. A spectral color sensor precisely monitors the color values of the material. As soon as deviations from the target value are detected, the central control system sends correction commands to the dosing stations. The system uses the CIELAB color space to fine-tune the color along the three axes - lightness (L*), red-green (a*) and blue-yellow (b*). Even the smallest color changes can be registered and corrected. An impressive detail is the CLOOPMIX®'s ability to achieve

precise color results with just four setting colors. These colors are coordinated in such a way that in combination they enable all corrections along the color axes.

During a successful practical test on a Leistritz compounding line at sister company ROMIRA in Pinneberg, the CLOOPMIX® system was able to prove its efficiency. Despite the natural color variations of the recyclate, the coloring remained constant and the system reacted promptly to material changes. The very accurate measurement enabled a color deviation of less than ΔE 1 - proof of how precisely the interaction between liquid colors, control and dosing works. A video of the test run with details on how the system is set up can be found at:

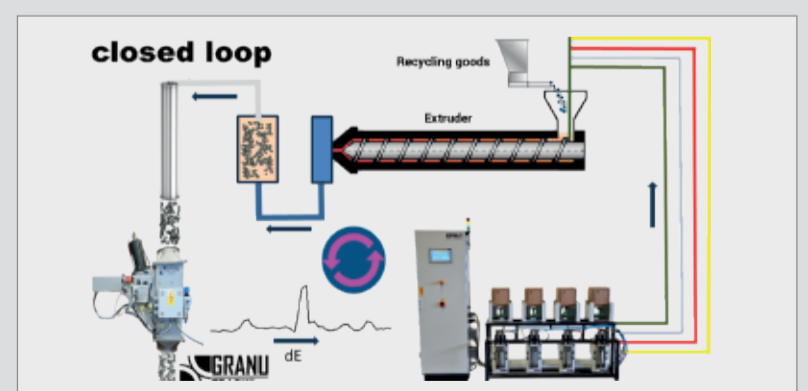


www.rowasol.de/en/applications

The successful test run illustrates the close partnership between ROWASOL and OPM Mechatronic, who have created a pioneering solution for the automation

of recyclate compounding with the CLOOPMIX® system. The system makes it possible to process even challenging recycled materials with minimal use of resources and consistently high color quality. Thanks to the precise interaction of liquid colors, intelligent control and real-time color measurement, the coloring remains stable even with material fluctuations. This project is another milestone in sustainable plastics processing and impressively demonstrates that efficiency, precision and environmental protection can go hand in hand. ■

➤ More information
Udo Wilkens
+49 4101 706 335
u.wilkens@rowasol.de



Solar, of course:

ROWA GROUP COMPANIES ARE EXPANDING PV SYSTEMS

Sustainability is not a vision for us, but a reality that has always been lived. We develop and produce long-lasting, high-quality products that, on the one hand, contribute to reducing CO₂ emissions through their use - for example in the automotive industry - and, on the other hand, represent increasingly efficient solutions themselves.

But sustainable thinking and action is not only a matter of course for the ROWA GROUP with regard to our products - the topic also has a very high priority in production processes, on our company premises and with regard to internal processes:

Whether it's electric charging stations for our employees' vehicles, sourcing food from regional, sustainable agriculture, or advancing the energy management system within the framework of DIN EN ISO 50001, a standard to which most of the Group's companies in Germany have already been certified for several years - there are many small and large examples of our responsible use of resources. A current example, which has recently been expanded, is the topic of renewable energies: With ROMIRA, ROWA Lack and ROWA Masterbatch, three companies in the ROWA GROUP have photovoltaic systems in operation or are currently in the process of finally installing them.

"Last year we were able to generate 270,000 kWh and thus save around 103 t of CO₂. This will increase significantly again this year, as we have expanded and are now expected to generate around 460,000 kWh with over 1,400 solar modules," explains Thomas Holzberg from ROMIRA GmbH.

"Everything on our buildings is also geared towards the sun," reports Mario Scheid from ROWA Masterbatch. **"So far there are 538 modules here that will generate over 200,000 kWh of electricity".**

And the ROWA Lack production site in Seevetal has also been upgraded to conserve resources:

"By installing bifacial solar modules, which can also convert radiation reflected from the light roof surface into energy, we have taken another step towards a more sustainable future. The modules were installed on the office and production building and the warehouse at the end of last year and achieve a total output of 280 kWp," says Dr. Robert Fichtler, Managing Director of ROWA Lack, commenting on the current status.

For us, the use of solar power is a logical step towards an increasingly sustainable economy. And this is precisely what is not possible without high-quality plastics like ours, for example in the entire field of electromobility, from cars to charging stations, or many other promising applications. ■

SUSTAINABILITY

within the ROWA GROUP

NEW
DEVELOPMENT

TRAMACO presents TRAPYLEN® 189 S: NEW ADHESION PROMOTER FOR PRINTING INKS WITH ECHA-COMPLIANT STABILIZER - REQUEST SAMPLE MATERIAL NOW

TRAMACO is launching TRAPYLEN® 189 S, a newly developed adhesion promoter specially designed for use in printing inks - especially in screen printing. The chlorinated polypropylene impresses with its ECHA-compliant stabilizer and opens up a wide range of application and processing options in plastic coating and solvent-based adhesives.

PRODUCT FEATURES AND ADVANTAGES

- » High compatibility and very good pigment wetting capacity: TRAPYLEN® 189 S ensures excellent adhesion and at the same time a high gloss level and good weather resistance.
- » Versatile areas of application: In addition to its use as a binder for printing inks (especially screen printing), TRAPYLEN® 189 S can also be used as an adhesion promoter in plastic coatings and solvent-based adhesives (including NR/SBR and polychloroprene-based adhesives).
- » Proven adhesion to polypropylene, PP/EPDM and thermoplastic rubbers: Limited adhesion to polyethylene is also possible.
- » Grease and oil resistance: For higher requirements, TRAPYLEN® 189 S can be combined with other TRAPYLEN® grades with a lower chlorine content.

PROCESSING AND APPLICATION

1. Protection from moisture and sunlight

To ensure the quality of the product, direct sunlight and humidity should be avoided. TRAPYLEN® 189 S is also available in pre-dissolved form if required.

2. Solubility and solution recommendation

- » Soluble in aromatics, ethyl acetate and ketones
- » Insoluble in aliphatics and alcohols
- » Preparation of the solution: First place the solvent in a suitable container. Then add TRAPYLEN® 189 S while stirring (dissolver). The resin dissolves by shearing; the temperature should rise to approx. 60 °C and be maintained for approx. 3 hours. The solids content is then adjusted to the desired concentration with additional solvent and filtered.

3. Additional quantity and further processing

The necessary amount to be added to the main matrix must be determined for each application by appropriate tests.

- » Screen printing varnish: Usual application quantity is 3-4 g/m², drying time approx. 30 seconds at 80 °C

TECHNICAL DATA

- » Product name: TRAPYLEN® 189 S
- » Chemical character: Chlorinated polypropylene
- » Texture: Brittle, slightly yellow and transparent granules
- » Chlorine content [%]: 36
- » Viscosity (dyn.) (50% in ethyl acetate) [mPas]: 400

REQUEST SAMPLE MATERIAL NOW

Convince yourself of the outstanding properties of TRAPYLEN® 189 S! We will be happy to provide you with sample material so that you can convince yourself of the first-class adhesion, brilliant gloss behavior and versatility in your own applications. Get in touch with us today:

We look forward to supporting you with your projects! ■

➤ More information

Tom Janocha
+49 4101 706 02
primer@tramaco.de

UPCOMING!

Next trade fair



EUROPEAN COATINGS SHOW COMING SOON!

One of the trade fair highlights is just around the corner, and TRAMACO and ROWA Lack will of course be taking part in the important industry meeting for the paint and varnish industry.

YOU CAN FIND US FROM MARCH 25 TO 27 AT THE NUREMBERG EXHIBITION CENTER IN HALL 1, STAND 107



WATER-BASED ANTI-GRAFFITI LACQUERS FOR ARTIFICIAL LEATHER APPLICATIONS

Graffiti - in many cases unauthorized and often unattractive-looking markings and lettering on almost every conceivable surface. These "works of art" applied with ballpoint pens, permanent markers or spray paint are an unfortunately common phenomenon, especially in public spaces. And a costly one at that, as graffiti removal is usually very time-consuming. In the artificial leather sector, anti-graffiti products from ROWA Lack provide a remedy.

Many substrates are coated with anti-graffiti coatings during production or shortly after installation at the latest to prevent spray paints, inks and the like from adhering or to make it easier to remove them. For hard substrates, such as stone and plaster façades or steel structures, the market offers a wide range of different coating systems. However, anti-graffiti products are also required for soft substrates such as seat surfaces. ROWA Lack is specialized in the development and production of coatings for flexible web material, which is used in the artificial leather sector, among others. The formulation of suitable anti-graffiti coatings is quite complex. This is because, in addition to protecting the substrate against graffiti, appropriate coatings should also increase the mechanical and chemical resistance of the surface. At the same time, of course, the look, feel and flexibility of the material must be preserved in the best possible way.

The latest developments in this area are the products ROWAKRYL® M-35200W and the slightly more matt version M-35252W as well as the gloss version ROWAKRYL® G-35294W. In addition to the anti-graffiti properties, these coatings also meet all the other requirements mentioned. The transparent, water-based 2K systems have been specially optimized for a pot life of more than eight hours to ensure the longest possible processing time. This is despite the fact that the catalyst ROWASET 63762 must be added to the lacquers before processing in order to develop their properties. The lacquers are applied directly to the coated web material, ideally with an anilox roller or doctor blade.



The obligatory drying process after coating takes place at 140 °C for one minute.

As no two artificial leather substrates are the same, different primers are available for different substrates if required. In many cases, the use of ROWATHAL® M-25100W or G-25106W has proven to be advantageous in order to further improve the properties of the overall structure.

The materials coated with the anti-graffiti systems presented here have high scratch resistance and also exhibit very good resistance to solvents and chemicals. In addition, surfaces coated with ROWAKRYL® M-35200W, ROWAKRYL® M-35252W or ROWAKRYL® G-35294W are characterized by a low soiling tendency and very good cleaning properties: Dried permanent marker or ballpoint pen ink can usually be removed effortlessly and residue-free from a coated artificial leather surface with a dry cloth. Even spray paint can be removed without leaving any residue in many cases.

If you are interested in these and other products, our experts will be happy to advise you. You can also take advantage of a personal meeting at the **European Coatings Show** from March 25 to 27, 2025 in Nuremberg. You will find us in **Hall 1, Stand 107.** ■

 **More information**
 Dr. Dennis Stoltenberg
 +49 4101 706 189
 d.stoltenberg@rowa-lack.de

Now it's getting cozy! FRESHLY BREWED: MOCHA MOUSSE IS THE PANTONE COLOR OF THE YEAR

For the regular color of the year election, a group of specialists from the Pantone Color Institute analyzes the current color design in a wide variety of industries and predicts the color trends. The result for 2025 continues what was already popular in 2024: a color world that radiates harmony and calm.

This year's winner, "Mocha Mousse," is, as the name suggests, a rich, warm and chocolatey brown, inspired by cocoa, coffee and warm wood, which also meets the need for comfort and deceleration.

What will please fashion and product designers alike with this choice: "Mocha Mousse" can be interpreted both individually and in combination with a variety of other colors - stylish and elegant on the one hand and casual and cozy on the other. The experts at ROWA

Masterbatch are certain: there is no getting around the versatile "Mocha Mousse" this year!

If you are interested in polymer-specific and individual color, additive and multifunctional masterbatches or in special compounds for thermoplastics, then play it safe and talk to us - or even better: come by! And rest assured, a mocha will be provided in any case, because there are several barista stations on our premises for the perfect coffee enjoyment and a moment of peace! ■

Extra: Coffee without a cake that matches the color isn't possible? Our marketing team thought so too - and created a Mocha Mousse Delight cake that tasted just as great as it looks here!

This is how it's prepared:

Preheat the oven to 175 degrees. Beat **3 eggs** with **80 g sugar** and a little salt until frothy. Mix **70 g flour** with **3 tablespoons of baking cocoa** and fold in. Fill the dough into a 20 cm round baking tin and bake for just under 15 minutes.

Mix **100 ml milk** with **1 packet of chocolate pudding powder**. Bring **40 ml milk** to the boil briefly with **5 g instant espresso powder**, **7 g sugar** and **1 teaspoon of bourbon vanilla paste**. Mix in the cold milk pudding mixture and bring to the boil while stirring. Strain the mixture through a fine sieve and allow to cool directly on the surface, covered with cling film. Melt **100 g dark chocolate** coating and stir into the pudding. Beat **400 ml of cream** with **2 packages of cream stiffener** and **20 g of sugar** until stiff and fold into the cooled pudding mixture. Spread the mousse on the cake base and leave to cool overnight. Melt **100 g of dark chocolate** and mix with approx.

70 ml of cream. Spread the glaze on the mousse and decorate with **berries** as desired.

Have fun baking and enjoying!



Mocha Mousse Delight Cake

State of the art: ROWA INC. WORKS AT A HIGH LEVEL

In the state of Pennsylvania, the team of ROWA Inc. produces and distributes products of ROMIRA, TRAMACO and ROWA Masterbatch. However, it is worth mentioning at this point that this location has a similarly extensive range of equipment in the polymer laboratory in terms of testing equipment and production facilities as the main production facility in Pinneberg.

Almost all relevant mechanical and analytical testing for research and production materials can be done here. Furthermore, equipment for thermal analysis is available as well as spectrophotometers, extruders, vacuum furnaces, mixers and everything else necessary to the high standard of the ROWA GROUP from here for the North and Central American market.

Anyone who has the opportunity, is cordially invited by Dave Baglia and his team to arrange a meeting at the ROWA Inc. factory located in Croydon, Pennsylvania. Here, too, you can expect interesting insights and a warm welcome. ■

Please feel free to contact us directly at dave.baglia@rowainc.net

➤ More information
Dave Baglia
+1 609 567 8600



POLYMER LABORATORIES

Physical / Mechanical:

- » Impact
- » Tensile, Flexural
- » Density

Thermal:

- » Melt Flow Index
- » Heat resistance – Vicat/HDT

Analytical:

- » DSC, TGA, FTIR
- » Xenon and QUV weather chambers

Color:

- » Spectrophotometer and light booth

MISC

- » Boy and Arburg molding machines – test bars and color chips/plaque
- » Single screw extruder – rod and film die
- » Carver heated platen press
- » Vacuum ovens
- » Desiccant dryer
- » Precision scales
- » Mixaco speedy mixer



ROWA Inc. provides complete support for ROMIRA in the USA.

ROWA GROUP

ROWA NEXT



2025

MAR



MARCH 25 - 27, 2025
NÜRNBERG
HALL 1, STAND 107
TRAMACO, ROWA LACK

MAR



MARCH 26 - 27, 2025
MANNHEIM
STAND 10
ROMIRA

MAY



MAY 7 - 8, 2025
MALMÖ
STAND B20
ROMIRA

MAY



MAY 13 - 15, 2025
BAD SALZUFLEN
20-H28
ROMIRA, ROWA MASTERBATCH, ROWASOL

OCT



OCTOBER 8 - 15, 2025
DÜSSELDORF
HALL 8A, STAND B28
ROWA GROUP

DEC



DECEMBER 3 - 6, 2025
ISTANBUL
ROMIRA



STAY TUNED!

You enjoyed reading this and would like to stay at the ROWA GROUP ball? No problem, just scan the QR code on the left or send us an email to: subscribe@rowa-group.com - we will be happy to add you to our distribution list. By the way: On our website rowa-group.com you will find all recent issues of ROWAnews in the online version. And you can also find exciting news from the companies on our LinkedIn channels. Follow us!

VISIT US

ROWA GROUP 2025

LinkedIn



All personal designations apply equally to all genders. The abbreviated language form is for editorial reasons only and does not imply any judgment.

ROWA Masterbatch GmbH
Siemensstraße 1-3
25421 Pinneberg
Phone: +49 4101 706 01
info@rowa-masterbatch.de
www.rowa-masterbatch.de

TRAMACO GmbH
Lise-Meitner-Allee 8
25436 Tornesch
Phone: +49 4101 706 02
info@tramaco.de
www.tramaco.de

ROMIRA GmbH
Siemensstraße 1-3
25421 Pinneberg
Phone: +49 4101 706 03
info@romira.de
www.romira.de

ROWASOL GmbH
Siemensstraße 1-5
25421 Pinneberg
Phone: +49 4101 706 04
info@rowasol.de
www.rowasol.de

ROWA Lack GmbH
Siemensstraße 1-5
25421 Pinneberg
Phone: +49 4101 706 05
info@rowa-lack.de
www.rowa-lack.de

ROWA France S.a.r.l
7, rue Albert Einstein 77420
Champs sur Marne
Phone: +33 1 646 81 616
info@rowa-france.com

ROWA Inc.
110 Phyllis Dr Croydon,
PA 19021 USA
Phone: +1 609 567 8600
sales@rowainc.net
www.rowainc.net

ROWA Korea Co., Ltd
511-16, Joogyo-Ri,
Yesan Yeop
Yesan-Gun, Chungnam-Do
Phone: +82 41 335 42 03
info@rowa-korea.com

Ningbo ROWA Coatings
Technology Co., Ltd
Rm.1218, Block A2, R&D
Park, Lane 587, Juxian Rd,
Hi-Tech Zone, Ningbo City
Zhejiang Province, P.R.China
Phone: +86 574 87229282
info@rowa-china.com